



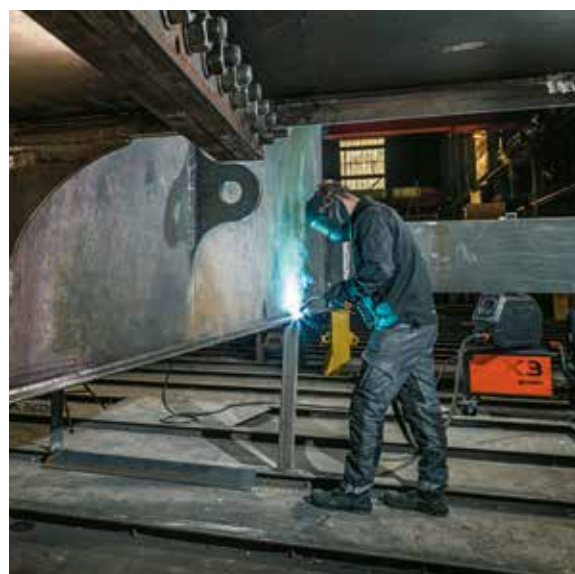
### Simple to set and weld

Designed for simplicity and ease of use, the X3S FastMig has both AUTO and MANUAL set-up options via the icon-based user interface, for fast and accurate parameter selection.



### Work in tough conditions

With a robust design and durable wire feeder, the X3 FastMig was built for difficult jobs in the most challenging conditions. It looks tough, and it is.



### Powerful and productive

X3S FastMig delivers 420 amps at a 60% duty cycle, supporting fast changing and variable welding tasks.

## X3S FASTMIG 420 SYN

Feature		X3S FastMig 420 SYN G	X3S FastMig 420 SYN W
Mains connection voltage 3~ 50/60 Hz		380 - 415 V ±10 %	380 - 415 V ±10 %
Output at +40 °C	60% MIG	420 A	420 A
	100% MIG	350 A	350 A
	60% MMA	400 A	400 A
	100% MMA	330 A	330 A
Welding current and voltage range	MIG	15 A/12 V - 420 A/40 V	15 A/12 V - 420 A/40 V
	MMA	15 A/10 V - 400 A/41 V	15 A/10 V - 400 A/41 V
	Gouging	15 A/10 V - 400 A/41 V	15 A/10 V - 400 A/41 V
Operating temperature range		-20...+40 °C	-20...+40 °C
Storage temperature range		-40...+60 °C	-40...+60 °C
EMC class		A	A
Degree of protection		IP23	IP23
External dimensions	LxWxH	698 × 251 × 361 mm	698 × 251 × 613 mm
Weight without accessories		35 kg	47 kg
Standards		IEC 60974-1, -10	IEC 60974-1, -2, -10
Product code		X3S420G	X3S420W

Description	Product code
X3S Power Source Syn 420 G	X3S420G
X3S Power Source Syn 420 W	X3S420W
X3 Wire Feeder HD300	X3HD300
X3 4-wheel Trolley	X3T4
X5 Wire Feeder 2-wheel trolley	X5702010000
X5 Wire Feeder Trolley	X5702020000
X5 Wire Feeder HD300 Hanger for Boom	X5702041000
X5 Wire Feeder HD300 Protection Sliders with gun support	X5702091000
Interconnection cable 70-G 1,5M	X37001MG
Interconnection cable 70-W 1,5M	X37001MW
Interconnection cable 95-G 1,5M	X39501MG
Interconnection cable 95-W 1,5M	X39501MW
Interconnection cable 70-G 5M	X37005MG
Interconnection cable 70-W 5M	X37005MW
Interconnection cable 70-G 10M	X37010MG
Interconnection cable 70-W 10M	X37010MW
Interconnection cable 70-G 15M	X37015MG
Interconnection cable 70-W 15M	X37015MW
Interconnection cable 70-G 20M	X37020MG
Interconnection cable 70-W 20M	X37020MW
Interconnection cable 70-G 25M	X37025MG
Interconnection cable 70-W 25M	X37025MW
Interconnection cable 70-G 30M	X37030MG
Interconnection cable 70-W 30M	X37030MW
HR53 Digital Hand Remote	HR53
GXe torch mounted remote control	GRe50



Scan for more info



# X3S FASTMIG

Brilliantly simple, brutally effective







### Tough, simple and precise

X3S FastMig is your fast route for completing high-quality welds in wide ranging welding and fabrication environments. Robust and durable, the X3S FastMig can handle the knocks of everyday industrial welding and the new icon-based user interface saves time with fast setup and easy parameter selection, giving you immediate control over key functions for reliable high-quality welding.

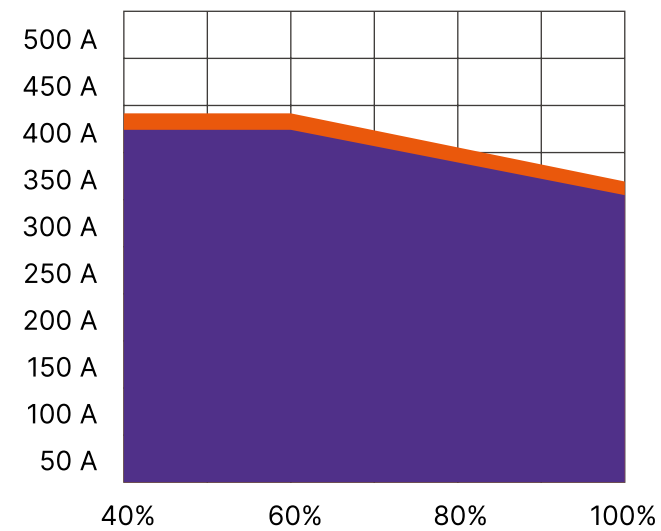
Powerful and productive, X3S FastMig delivers 420 amps at a 60% duty cycle, perfect for production welding where capable, accurate and reliable equipment is essential, supporting fast changing and variable work tasks.

X3S FastMig comes as standard with the heavy duty, impact resistant HD300 wire feeder, featuring dual-wall construction and strong Dura torque 4x4 wire drive mechanism. The HD300 wire feed unit features a safe-lift design, allowing the unit to be lifted and suspended by the handle.

A range of accessories are designed for alternative environments, including a 4-wheel cylinder cart, wire feeder trollies

and feeder protection slider. Add a boom hanger, allowing the wire feed unit to be suspended over a work area. Control X3S FastMig at distance with an optional remote control either through a Kemppi torch remote GRe50, or handheld wired remote HR53.

### Duty Cycle



- MIG X3S FastMig 420 G / W
- MMA X3S FastMig 420 G / W

A tough and robust plastic-cased wire feeder cabinet features a dual wall construction designed to absorb the knocks of industrial use in heavy welding and fabrication applications.



The new non-language-based user interface is clear, easy, and fast to set up for both professional and semi-professional welders.

Duratorque 4x4 wire drive is extremely strong and reliable, ensuring high quality welds in all conditions

